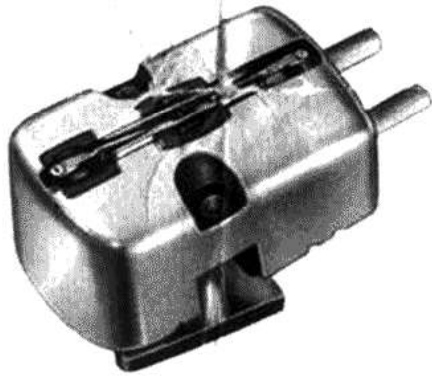


# VARIABLE RELUCTANCE CARTRIDGES

## OTHER GENERAL ELECTRIC HIGH FIDELITY PRODUCTS

- |                                       |                                      |
|---------------------------------------|--------------------------------------|
| "Baton" Tone Arms                     | Dual Co-axial High Fidelity Speakers |
| Audio Filters                         | High Fidelity Equipment Cabinets     |
| High Fidelity Amplifiers              | Extended Range Speakers              |
| "Distributed Port" Speaker Enclosures |                                      |



## SPECIFICATIONS

CARTRIDGE CAT. NO.	STYLUS RADIUS	RECOMMENDED USE	EQUIPPED WITH STYLUS CAT. NO.
RPX-040A	.003 IN.	WIDE GROOVE (78 RPM)	RPJ-03S
RPX-041A	.001 IN.	MICROGROOVE (33 1/3 & 45 RPM)	RPJ-01S
RPX-061A	.001 IN.	MICROGROOVE (33 1/3 & 45 RPM)	RPJ-01D
RPX-063A	.003 IN.	WIDE GROOVE (78 RPM)	RPJ-03D
RPX-050A	.001 & .003 IN.	WIDE AND MICROGROOVE	RPJ-010A
RPX-052A	.001 & .003 IN.	WIDE AND MICROGROOVE	RPJ-013A
RPX-053A	.001 & .003 IN.	WIDE AND MICROGROOVE	RPJ-012A

STYLUS PRESSURE	6 TO 8 GRAMS
RESISTANCE (DC)	420 OHMS
INDUCTANCE	520 MILLIHENRIES
NOMINAL OUTPUT VOLTAGE AT: 5 1/2 CM/SEC. STYLUS VELOCITY (INNER BAND OF RCA # 12-5-49 TEST RECORD)	12 MILLIVOLTS
11 CM/SEC. STYLUS VELOCITY	24 MILLIVOLTS



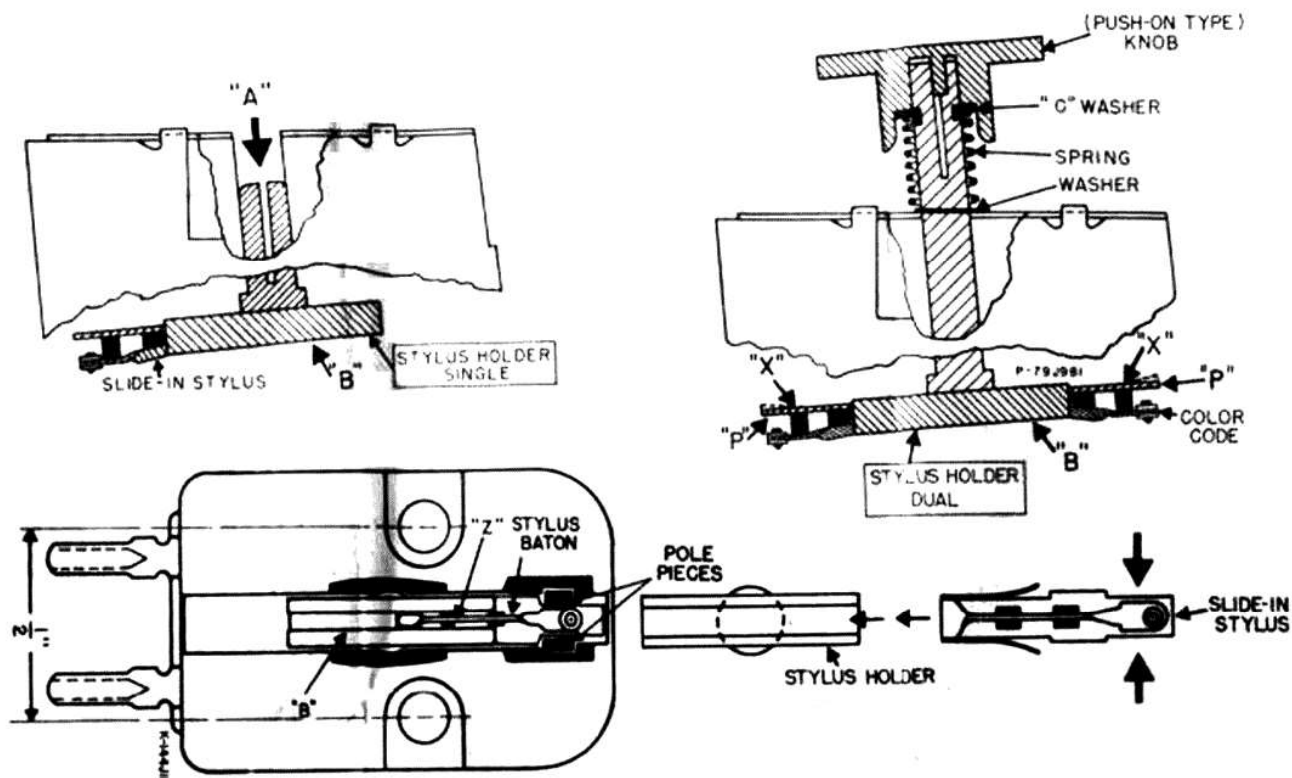


FIG. 2. CARTRIDGE AND STYLUS DETAIL

## MOUNTING

The outline drawing of Fig. 2 shows the pick-up cartridge viewed from the bottom with dimensions for the screw mounting centers. The cartridge should be mounted with its top surface parallel to the top of the tone arm in order that the stylus will contact the record at the proper angle.

For mounting the dual cartridge, a  $\frac{1}{8}$ -inch hole must be drilled through the top of the tone arm for the stylus assembly shaft to pass through. This hole must be accurately placed. This is accomplished by removing the dual stylus assembly as described in "Stylus Assembly Removal," and mounting the cartridge in the tone arm. A marking tool that will fit through the cartridge center hole (Fig. 2 "A") will scribe a mark on the tone arm in the proper place.

After removing the cartridge the hole may be drilled. The stylus assembly is then re-installed in the cartridge and the cartridge is mounted in the tone arm. The stylus pressure should now be adjusted to between 6 and 8 grams, as shown in the cartridge specifications.

**CAUTION:**—General Electric Variable Reluctance cartridges are a type of magnetic cartridge, and are therefore subject to hum pickup from stray magnetic fields. Although hum bucking measures have been taken in their design and construction, it is advisable to keep these cartridges as far from any stray magnetic (A-C) fields as possible.

## TO INSTALL OR REMOVE SLIDE-IN STYLI (SINGLE OR DUAL)

Push stylus holder out and twist sufficiently to render Channel "B" accessible from both ends. Grasp the slide-in stylus at the arrows (Fig. 2) by your thumb and forefinger. Insert the slide-in stylus into Channel "B," being sure it is in all the way. Push stylus holder back into the slot in the cartridge by thumb pressure on Channel "B." The end of the channel with the small hole drilled in it should be used for the .001 styli, thus aligning the shaft keyway so the knob will point out the proper stylus (Dual only).

**CAUTION:**—When inserting the slide in the stylus holder, be certain the flat side is flush with the bottom of the channel.

The removal of the stylus is accomplished by reversing the installation procedure.

## STYLUS HOLDER REMOVAL

**SINGLE:**—Insert a small nail or equivalent tool into the hole marked "A" in Fig. 2 and push the stylus holder out of the cartridge.

**DUAL:**—Pull off the knob, compress the spring slightly and remove the "C" washer. Pick off the spring and flat washer and slide the stylus holder out of the cartridge.

## STYLUS HOLDER INSTALLATION

**SINGLE:**—Place round, split part of stylus holder in the hole in the bottom of the cartridge. Press firmly on part "B," shown in Fig. 2, to seat holder in the slot provided for it in the cartridge. Make sure the holder is in as far as it will go.

**DUAL:**—Insert stylus holder shaft into cartridge so that it slides in as far as it will go. Place the flat washer and the spring over the stylus holder shaft. Compress the spring slightly so that the "C" washer may be inserted in the slot provided. The knob may be slid on the shaft after the cartridge has been mounted in the tone arm. When mounting the knob, make sure that the key in the knob matches the slot in the stylus holder shaft. The elongated slot in the dual stylus holder shaft may be adjusted to correct for loose fitting knobs.

## SERVICE

The stylus must be centered exactly between the pole pieces for proper operation. Also, the stylus baton must not touch the stylus holder channel. Should the stylus be bent off center, it may be brought into proper alignment by the slight pressure of a thin knife inserted between Channel "B" and the stylus baton at point "Z" (Fig. 2).

To take up any lateral play of the slides at "P-P" (Fig. 2), bend the slides up (away from stylus tip) slightly at "X-X" with tweezers. This will allow the slides at "P-P" to make contact with vee slots in the cartridge body, thus keeping the slides aligned.

To insure optimum performance from the General Electric Variable Reluctance Cartridge, its stylus, magnetic pole pieces, and gaps, should be cleaned of foreign particles periodically. A soft bristle brush, G.E. Cat. No. RQB-001 or equivalent, should be used.

RKP-009A—Knob Kit—Contains three knobs, a "C" washer, flat washer, and spring. The next to the shortest knob (.340"), is used with the G.E. Baton Pickup Arm, Models A1-500 and A1-501.

### INDIVIDUAL REPLACEMENT "SLIDE-IN" STYLI

G.E. CAT. NO.	STYLUS TIP	RECOMMENDED USE	COLOR CODE †
RPJ-01S	1 MIL SAPPHIRE	*MICROGROOVE	RED
RPJ-02S	2.5 MIL SAPPHIRE	*N.A.B. TRANSCRIPTIONS	WHITE
RPJ-03S	3 MIL SAPPHIRE	*WIDE GROOVE	NONE
RPJ-01D	1 MIL DIAMOND	MICROGROOVE	BLACK
RPJ-02D	2.5 MIL DIAMOND	N.A.B. TRANSCRIPTIONS	YELLOW
RPJ-03D	3 MIL DIAMOND	WIDE GROOVE	VIOLET

\* SYNTHETIC SAPPHIRE

† COLOR CODE ON END OF STYLUS

### DUAL STYLI ASSEMBLIES

G.E. CAT. NO.	EQUIPPED WITH "SLIDE-IN" STYLI NOS.
RPJ-007A	RPJ-01S AND RPJ-02S
RPJ-010A	RPJ-01S AND RPJ-03S
RPJ-011A	RPJ-01D AND RPJ-02D
RPJ-012A	RPJ-01D AND RPJ-03D
RPJ-013A	RPJ-01D AND RPJ-03S

### WARRANTY

The General Electric Company warrants to the purchaser of each new General Electric pickup cartridge for his own use that any part thereof which proves to be defective in material or workmanship within ninety (90) days from the date of his purchase will be repaired or replaced in accordance with the terms of this warranty.

If the cartridge should prove to be defective during said ninety-day period, such defect should be brought to the attention of the General Electric Reseller from whom the cartridge was purchased. If upon examination the cartridge is determined to be in fact defective in material or workmanship, the Reseller will either repair the cartridge or furnish the purchaser with a replacement cartridge. The responsibility of General Electric Company is limited to making a repaired or replacement cartridge available to the purchaser and does not include the furnishing of any labor whatsoever, such as that required to diagnose trouble or to remove or install the cartridge. Nor does it include responsibility for any transportation expense, such as may be required for the return of a defective cartridge.

This warranty is made only to purchasers located and purchasing within the continental limits of the United States and the Territory of Hawaii and no warranty, express or implied, is made to any other purchasers.

The foregoing is in lieu of all other warranties, express, implied, or statutory, and General Electric Company neither assumes nor authorizes any person to assume for it any other obligation or liability in connection with said cartridge.

*Progress Is Our Most Important Product*

**GENERAL  ELECTRIC**